

Chronicles

CAREER QUEST LEARNING CENTERS • DECEMBER 2017



Onward and Upward! CELEBRATING OUR CAREER QUEST GRADUATES

**LANSING**
(SEE MORE
GRADUATE PHOTOS
ON BACK PAGE)

Lansing held graduation ceremonies for 95 students on Friday, November 17, at Grand Ledge High School, 820 Spring Street, Grand Ledge. Nate Kretzschmer gave the commencement address, speaking on the importance of achieving goals and overcoming obstacles. He was joined by student speaker Richard Smedley. "It's an amazing experience to witness these students attain such a milestone in their life," said Campus Manager

Mollie Woodworth. "I thank their families and also our wonderful faculty and staff for their unwavering support. Because of them, these students are well on their way to bright and promising futures."

Jackson held graduation ceremonies for 49 students Friday, November 10, at East Jackson High School, 1566 North Sutton Road. "Graduation is one of the best nights of the year for us," said Jackson Campus Director of Career Services, Sheri Alexis.

"Seeing our graduates walk across the stage and accomplish what they started is so special. Our staff and faculty could not be more proud of these students. We enjoy seeing their friends and family members celebrate with us on this special night."

Mt. Pleasant held graduation ceremonies for 32 Medical Assistant students on Friday, November 10, at the Central Michigan University

CONTINUED ON BACK PAGE

Jackson Campus

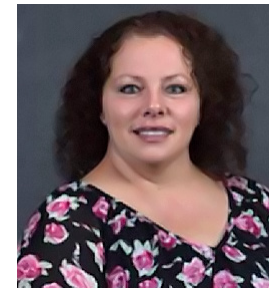
209 E. Washington Ave.
Suite 241
Jackson, MI 49201
517-990-9595

Student of the Month ■ November



Levi Logic, a Medical Assistant student, has been named Jackson's November Student of the Month for her drive for success and ability to handle every challenge that comes her way. "Since joining Career Quest, Levi has become involved with the Student Association and Student Advisory team and she's made High Honors. She also helps her fellow students stay motivated and on target for success," said Career Quest President Melissa Soderberg. "Levi is a single mother and a full-time employee, making her commitment even more impressive."

Staff Member of the Month ■ November



Medical Instructor **Chandra Gerry** has been named Jackson's November Employee of the Month for doing all she can to help her co-workers and for being active in all campus events. "She's very helpful to her students and they speak very highly of her. And she's always willing to stay on campus to tutor or help with the Student Association," said Career Quest President Melissa Soderberg. "Chandra has been a major asset during her time here at Career Quest."

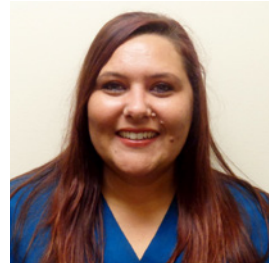
December Jackson Events

- 1 CNA Orientation 10:00am
- 4 CNA Start Day I Post-Externship Meeting 3:00pm
- 5 Pre-Externship Meeting 4:30pm
- 7 Orientation 1:30pm
- 11 Start of Blue/White Mod
- 13 Cookies & Cocoa 1:30pm
- 14 Cookies & Cocoa 5:30pm
- 15 Distribution of Angel Tree Items
- 18 Beginning of Winter Break

Lansing Campus

3215 S. Pennsylvania Ave.
Lansing, MI 48910
517-318-3330

Student of the Month ■ November



Medical Assistant student **Kristin Davis** has been named the Lansing Student of the Month for November for giving 100% in everything she does. "Kristin always enters Career Quest with a positive attitude and is kind to everyone she meets. She works hard to stay up on her studies and has received numerous awards for her academic performance," said Campus Manager Mollie Woodworth. "Kristin believes in helping others and is always willing to volunteer as a patient in her Medical Assistant classes. She also will lend a helping hand as a spot job worker."

Staff Member of the Month ■ November



Administrative Assistant **Alice Robinson** has been named the November Employee of the Month for the Lansing campus for being such a tremendous asset to the campus, doing a lot to ensure all employee and student needs are met. "Alice's outstanding customer service and quick problem-solving skills are just some of the many things that make her so special," said Campus Manager Mollie Woodworth. "She's always willing and able to take on special projects and step in to assist when needed, and she does it with a smile and great attitude."

December Lansing Events

- 5 Open Lab 8:00am-Noon
- General Education Study Help Period ... 1:00pm-3:00pm
- 6 Computer Navigation Class 2:00pm-4:00pm
- 7 Open Lab 8:00am-Noon
- General Education Study Help Period ... 1:00pm-3:00pm
- 8 Pre-Externship 9:00am-11:00am
- Post Externship 2:00pm-4:00pm
- 11 New Mod Begins
- 12 Open Lab 8:00am-Noon
- General Education Study Help Period ... 1:00pm-3:00pm
- 13 Computer Navigation Class 2:00pm-4:00pm
- 14 Open Lab 8:00am-Noon
- General Education Study Help Period ... 1:00pm-3:00pm
- 15 CPR Class Noon-4:00pm
- 19 Open Lab 8:00am-Noon
- General Education Study Help Period ... 1:00pm-3:00pm
- 20 Computer Navigation Class 2:00pm-4:00pm
- 21 Open Lab 8:00am-Noon
- General Education Study Help Period ... 1:00pm-3:00pm
- 18-21 Angel Tree pickup



ALL CAMPUSES: Dec 18-Jan 2 - Winter Break
Dec 25 - Christmas (Campus Closed)
Dec 31 - New Year's Eve (Campus Closed)

Mount Pleasant Campus

2116 Mission St.
Mount Pleasant, MI 48858
989-817-4431

Student of the Month ■ November



Medical Assistant student **Patty Webster** has been named Mount Pleasant's November Student of the Month for her upbeat and positive attitude. "Patty is a true leader in the classroom, whether it's playing games or participating in group work," said Mount Pleasant Campus Manager Shelby Stockwell. "She reaches out to her peers and holds study groups, has outstanding punctuality, and offers a listening ear whenever someone needs it."

Staff Member of the Month ■ November



Medical Instructor **Shelly Rydman** has been named Mount Pleasant's November Employee of the Month for being a friendly and outgoing spokesperson for Career Quest. "Shelly is a team player and shows superior communication skills on all levels," said Campus Manager Shelby Stockwell. "She's always eager to help – whether it's explaining the classroom setting to a prospective student or holding weekly study sessions with current students."

December Mount Pleasant Events

- 2 CNA Program starts
- 4 Pre-Externship Meeting 1:30pm
- 5 Pre-Externship Meeting 4:00pm
- 6 Advisory Meeting 1:00pm
- 7 Orientation 1:30pm
- 6-7 Bake Sale 11:00am-1:15pm and 5:00pm-7:30pm
- 8 Post Externship Meeting 1:00pm
- 11 Beginning of Blue/White Mod
- 13 Cookies & Cocoa 11:00am
- 14 Cookies & Cocoa 5:00pm

Onward and Upward!

CONTINUED FROM FRONT PAGE

Bovee Center Auditorium, 1200 S. Franklin Street. The keynote speaker was Medical Assistant Instructor Spencer Moore, who was joined by student speaker Danyell Grossett. "We're so excited to celebrate Mt. Pleasant's first graduating class," said Campus Manager Shelby Stockwell. "These students came here with goals and now we get to help them celebrate the next step toward accomplishing those goals."

